

ANALOGUE INDOOR CLOCK

ECO

The Eco clocks feature an elegant design that blends into any surroundings. Their simple two-piece housing design with its acrylic glass dome allows for a large reading angle.



4 STEPS TO YOUR ECO

To make sure your Eco meets all your requirements, you can assemble the components individually. Naturally, our experts will be happy to help.

1. How big does your Eco need to be?

SIZE

The Eco is available in three dial diameters. The reading distance varies depending on the dial, lighting, viewing angle, etc. These are the options:

Ø	READING DISTANCE
25 cm	20-25m
30 cm	25-30m
40 cm	35-45m

3. Pick your time code variant:

TIME CODE

2.



Would you like the one-sided or the two-sided version?

SHAPE

For the two-sided Eco solution, you can order two identical Eco models and the installation set (see page 9)

Code	Time code	Ø	Power supply	Hands	Movement	Max. power consumption	Accuracy (synchronized)	Loss of signal
MOBALINE SELF-SETTING: MXX								
M00	MOBALine	25-40	MOBALine	h/m	SAM 40	< 6mA @ 17VAC (0.1W)	< +/- 100ms	12:00 position after 24 hours
M21	MOBALine	25-40	MOBALine	h/m/s	SEM 40			
NTP (LAN) SELF-SETTING (WITH UNICAST AND MULTICAST): NXX								
N20	NTP	25-40	PoE	h/m	SAN 40	PoEclass 1: <1.9W ² / <3.8W ³	< +/- 50ms	12:00 position after 24 hours
N21	NTP	25-40	PoE	h/m/s	SEN 40			
POLARIZED IMPULSES: IXX								
I15	Min. impulse	25-30	24-48V impulse	h/m	AA0	6mA @ 48VDC (0.3W)	-	Standstill
I30	Sec. impulse	25-40	24-60V impulse	h/m/s	SEI 40	-	-	Standstill
WTD WIRELESS TIME DISTRIBUTION: RXX								
R75	WTD	25-30	2x AA battery	h/m	SAW 00	-	-	-
R76	WTD	25-30	2x AA battery	h/m/s	SEW 00	-	-	-
R77	WTD	25-30	12V	h/m	SAW 00 MPS	5mA @ 20VDC (0.1W)	< +/- 100ms	12:00 position after 24 hours
R78	WTD	25-30	12V	h/m/s	SEW 00 MPS	15mA @ 6VDC (<0.1W)		
DCF 77 / MSF: RXX								
R21	DCF 77 ¹	25-40	AA battery	h/m/s	FWUt	-	< +/- 100ms	12:00 position after 7 days
QUARTZ: QXX								
Q21	Quartz	25-40	AA battery	h/m/s	DQt	-	< +/- 5min/y ⁴	-
WI-FI: WXX								
W02	Wi-Fi	25-30	AA battery	h/m/s	SEW 30	-	< +/- 100ms	12:00 position after 7 days
W03	Wi-Fi	25-30	AA battery	h/m	SAW 30	-	< +/- 100ms	12:00 position after 7 days
W04	Wi-Fi	25-30	230V	h/m/s	SEW 30 MPS	3mA @ 230VAC (<0.69W)	< +/- 100ms	12:00 position after 7 days
W05	Wi-Fi	25-30	230V	h/m	SAW 30 MPS		< +/- 100ms	12:00 position after 7 days

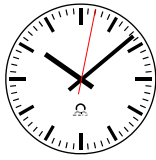
¹ internal antenna and DCF receiver ² single-sided clock ³ cascaded double-sided clock ⁴ without synchronization

4.

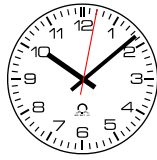
Which dial design do you like?

DIAL

The Eco offers the following standard design options. For logo prints, please contact our customer service.



dial 200



dial 210

General properties

The following properties apply to all Eco clocks:

Cover glass	Acrylic glass
Housing	High quality ABS plastic (RAL 9002)

Standards

Depending on the movement used in your Eco clock, the following standards apply:

MOVEMENT(S)	STANDARDS
SAM 40 SEM 40 SAN 40 SEN 40	2011/65/EU / 2014/30/EU / 2014/35/EU / 2016/797/EU EN 50121-4 / EN 60950-1 / EN 61000-6-2 / EN 61000-6-3
SEI 40	2011/65/EU / 2014/30/EU / 2014/35/EU / EN 61000-6-2 EN 61000-6-3
SAW 00 SEW 00 SAW 00 MPS SEW 00 MPS	2011/65/EU / 2014/30/EU / 2014/35/EU / EN 61000-6-2 EN 61000-6-3
DQt	2011/65/EU / 2014/30/EU / EN 55024 / EN 55032
FWUt	1999/5/EC / 2011/65/EU / EN 60950-1 / DIN EN 300-300 DIN EN 300-330-2 / ETSI EN 301 489-1 / ETSI EN 301 489-3
SAW 30 SEW 30 SAW 30 MPS SEW 30 MPS	EN 61000-6-1 / EN 61000-6-3

All Eco clocks are compliant with CE, RoHS and REACH.

YOUR ECO IS COMPLETE

You can now order your Eco and calculate the corresponding code. Enter the abbreviation for each component of your choice in the bright field and find your Eco code. It serves as the order code or as the foundation for further steps.

My Eco clock ECO.

1. Size Ø cm

2. Shape Code

3. Time code Code

4. Dial Code

Glass type Code

Housing type Code

Sequence number Code

Example order code



	1.	2.	3.	4.
EC	0.	30.	R1.	M21.
Eco	no illumination ¹	Ø 30cm	round, single-sided ²	dial 210
			movement SEM 40	acrylic glass ¹
				standard housing ¹
				sequence number ³
				0000

¹ standard, cannot be changed

² standard, cannot be changed; see double-sided clock information on page 2

³ The sequence number denotes special versions (e.g. clocks with a special dial). When ordering, please indicate the sequence number with 0000 (standard version); we will adapt this for any special version. Special versions can be reordered at any time stating the sequence number.

INSTALLATION



ECO.Ø.SET

Wall and ceiling set

Snap-on installation. Made of plastic.

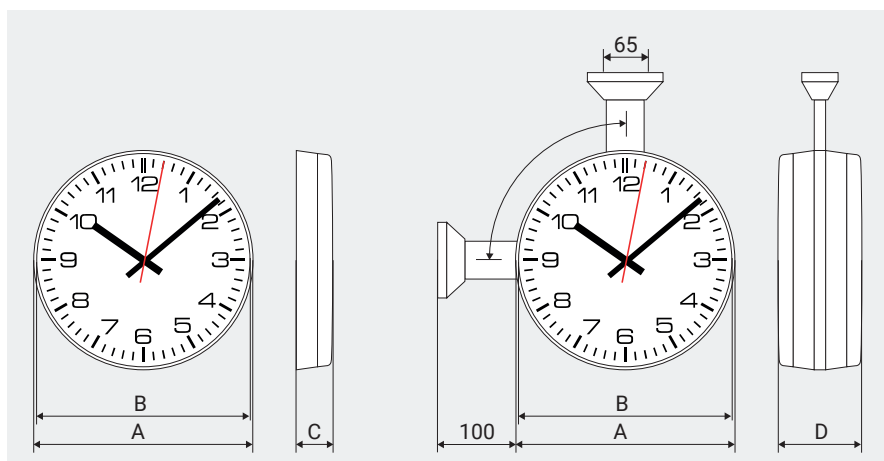
Ø 30/40

TECHNICAL DATA

TECHNICAL DATA	ECO
Operating conditions	-30 to +70 °C (0 to 95% relative humidity, non-condensing) SAW 00/SEW 00/SAW 00 MPS/SEW 00 MPS/SAW 30/SEW 30/SAW 30 MPS/SEW 30 MPS: 0 to +50 °C (0 to 90% relative humidity, non-condensing)
Degree of protection	IP 30

Ø	SINGLE-SIDED				DOUBLE-SIDED	
	A	B	C	Weight	D	Weight
25	254	247	62	0,45	-	-
30	290	275	51	0,65	118	1,65
40	418	403	55	1,45	126	3,45

All dimensions in mm and weights in kg.



*Do you have any questions?
We are happy to help.*